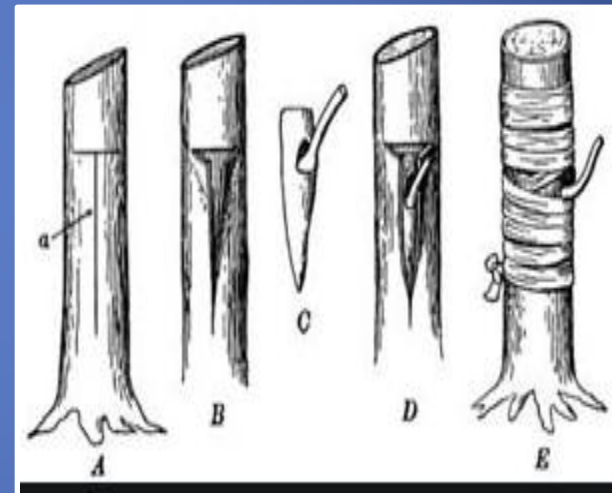
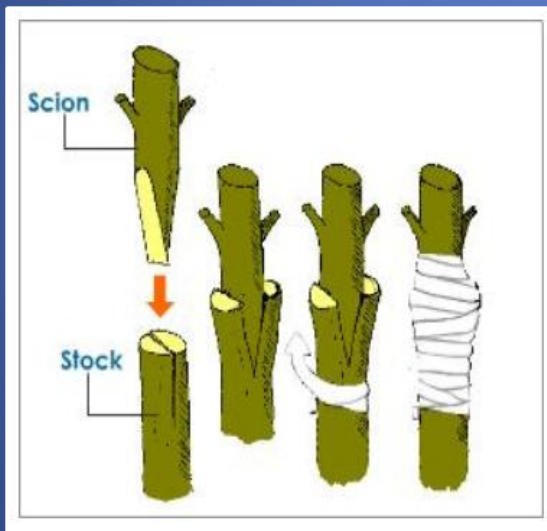


Spring and Late Summer Grafting Techniques



Darren Murphy, BIFC President
(2026)

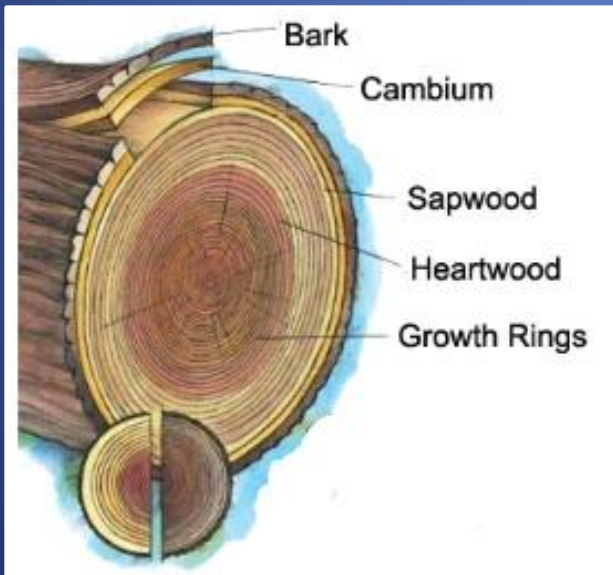
Benefits of Grafting

1. Quicker Propagation
2. Space Saver
3. Fruit Sooner
4. Tree Height
5. Fruit Salad
6. Tree Restoration or Healing
7. Expand Growing Range
8. Tree Replacement
9. Preserving History
10. Living Yard Art



Key Grafting Terms

1. Cambium layer and other parts of the tree
2. Scion Wood (or Cuttings)



Key Grafting Do's and Don'ts

1. Cambium layer connection between the scion wood and mother tree/branch/rootstock is essential to achieve a successful graft.
2. Graft to comparable species (e.g., apple to apple and pear to pear), with some minor exceptions.
3. Most stone fruits are compatible, such that a plum, peach, and apricot can be grafted onto the same tree.
4. The rootstock generally determines the size of the tree, whereas the scion wood establishes the fruit variety to be produced.

Grafting Supplies



Cutting Tools and Knife

Alcohol

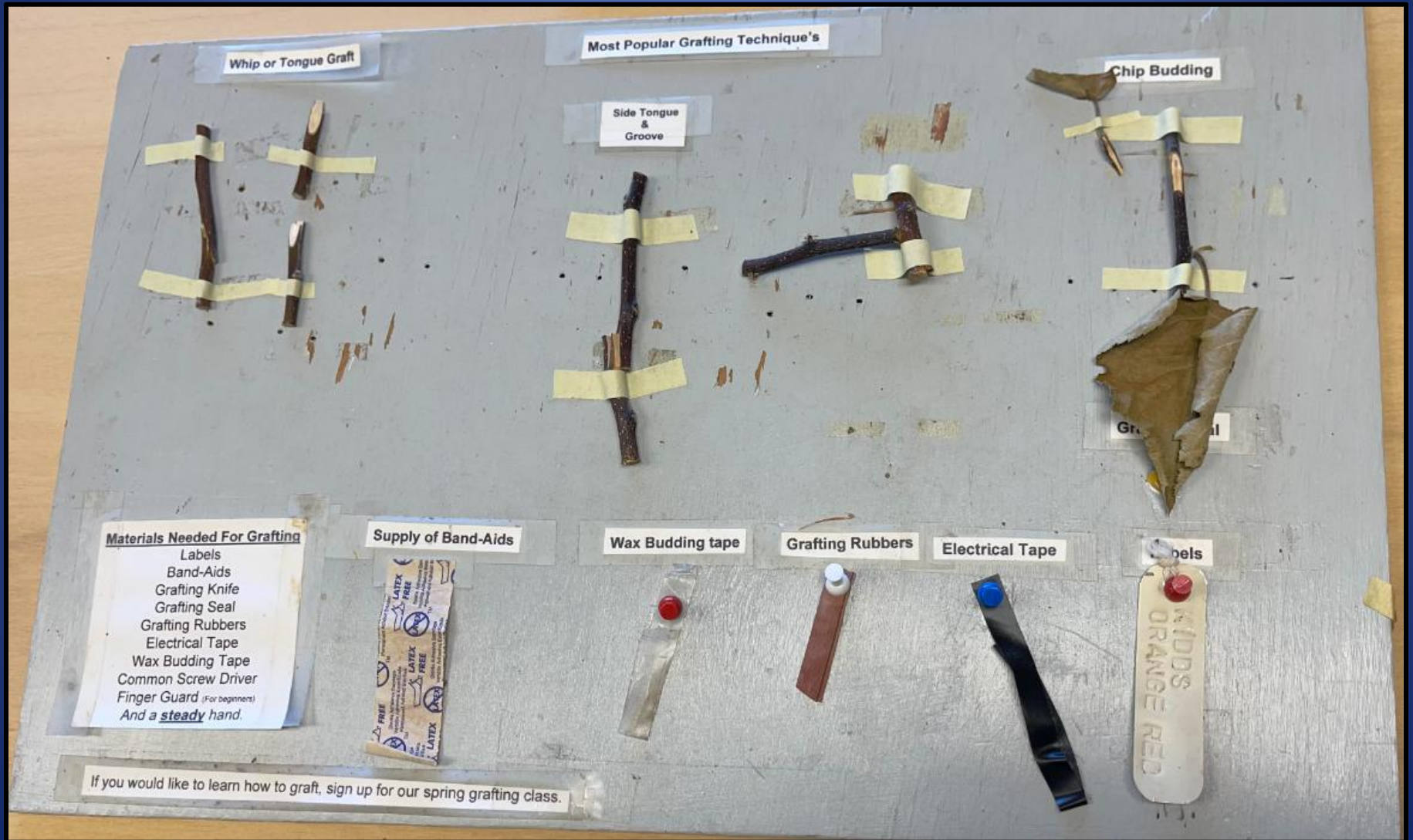


Sealant or Grafting Wax

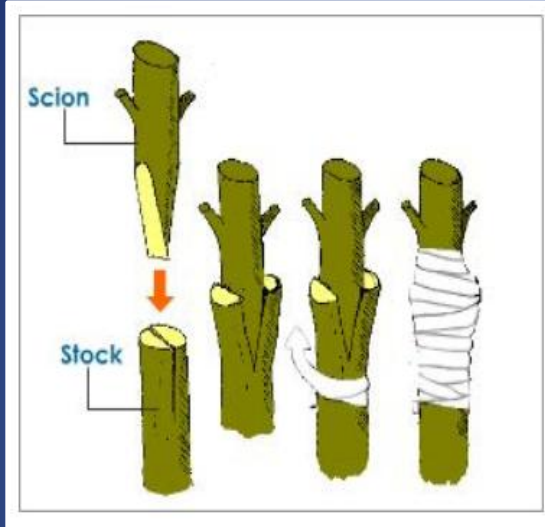
Wax, Floral, and Electric Tape



Grafting Techniques and Supplies



Grafting Techniques – Whip or Tongue



1. Done in late Winter/early Spring as fruit trees break dormancy
2. Done on small branches—either new rootstock or last year's growth on older trees
3. One of the easiest techniques to master

Grafting Techniques – Top

1. Done in late Winter/early Spring as fruit trees are breaking dormancy
2. Done on larger branches, mature trees
3. Fastest way of converting an older tree to new varieties



Step 1: Slip portion of bark away from cut branch.

Step 2: Prepare scion wood to insert into cut area.



Grafting Techniques – Top



Step 3: Insert scion wood and secure with small nail.



Step 4: Insert additional scion wood.



Step 5: Tape around bark cuts and apply waterproof sealant around any openings. Also seal tips of scion wood.

Grafting Techniques – Side

1. Also done in late Winter/early Spring
2. Ideal for medium-sized, younger branches with pliable bark
3. Good technique when branches are too large for grafting tool



Step 1: Slip portion of bark away from cut branch.

Step 2: Insert cut scion wood into cut bark section.

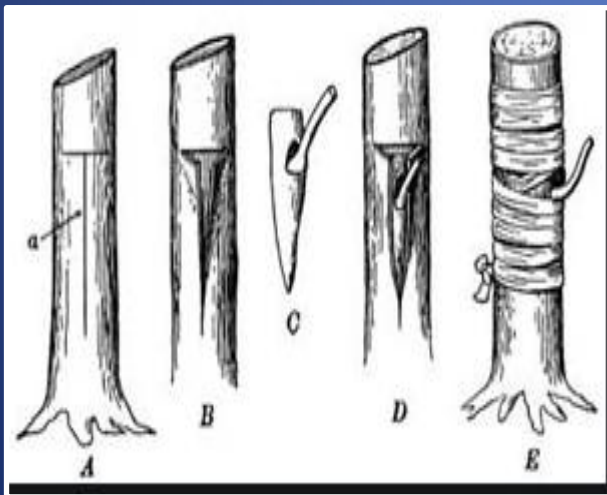
Step 3: Wrap with tape and close any remaining open areas with sealant.

Some Side Grafting Results

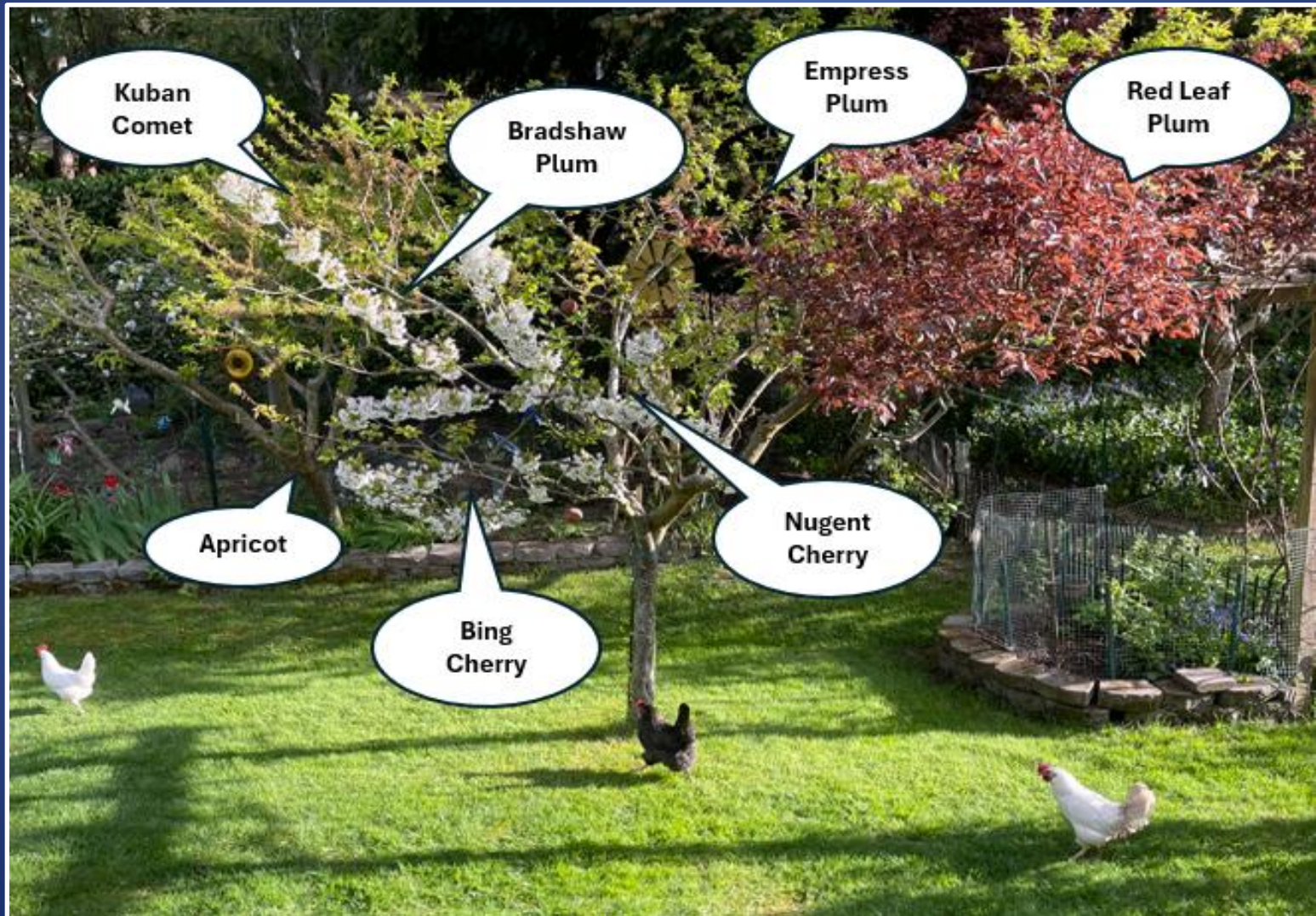


Grafting Techniques – Chip or Bud

1. Done in mid-August to early-September, before fruit trees become dormant
2. Generally done on 1- or 2-year old growth/branches
3. One of the most effective ways for grafting stone fruit (particularly cherries, peaches, and apricots)



Multi-Stone Fruit Tree Using Whip, Side, and Chip/Bud Grafting Techniques





Questions?